

PIANO DELLA SICUREZZA E COORDINAMENTO

Lavori di manutenzione generale relativi a opere edili e affini,
impianti elettrici Media Tensione e Bassa Tensione,
impianti idrotermosanitari e di condizionamento

Istituto Geriatrico "P. Redaelli" di Vimodrone
Via Giacomo Leopardi 3 - Vimodrone (MI)

ALLEGATO "B"

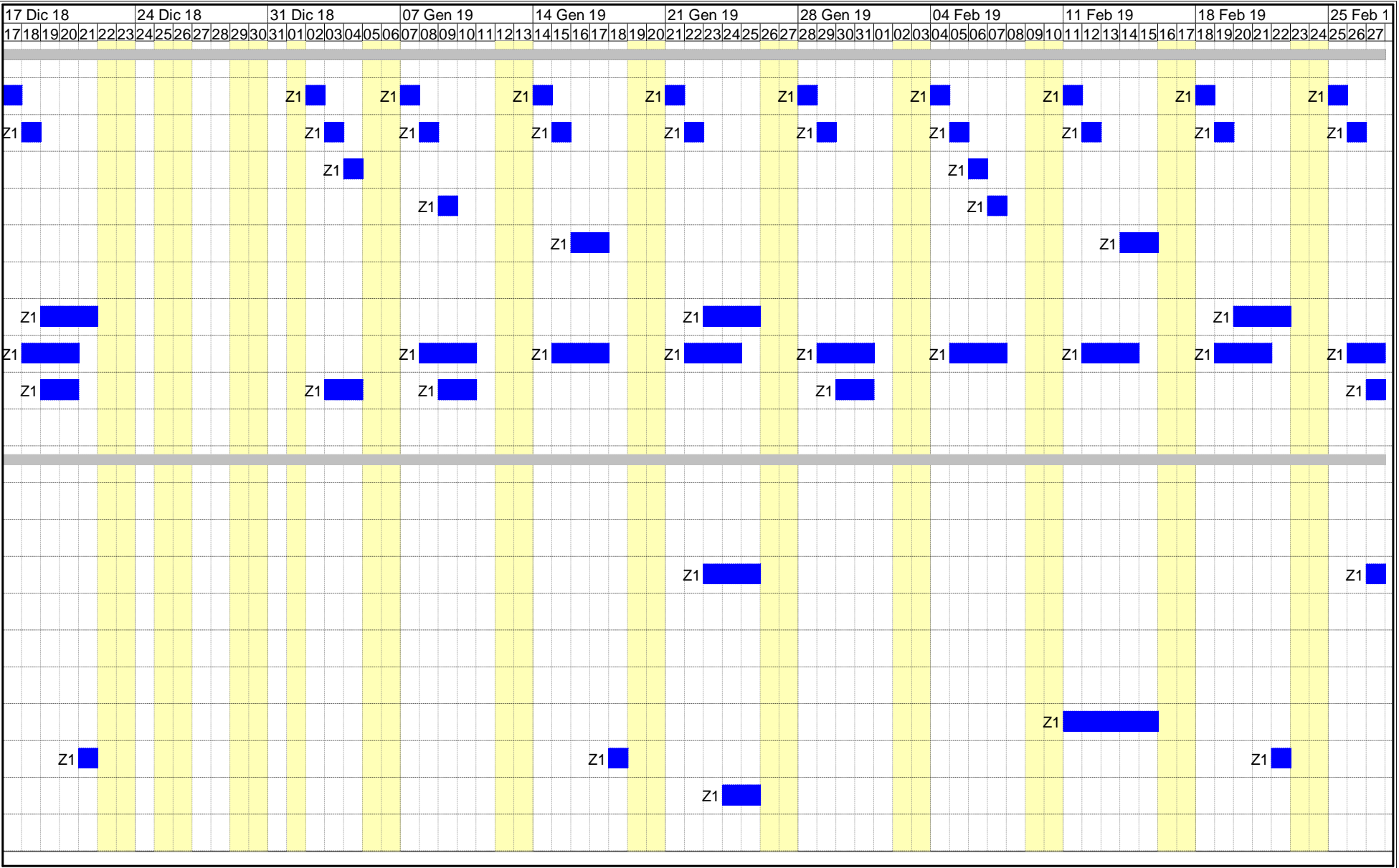
DIAGRAMMA DI GANTT

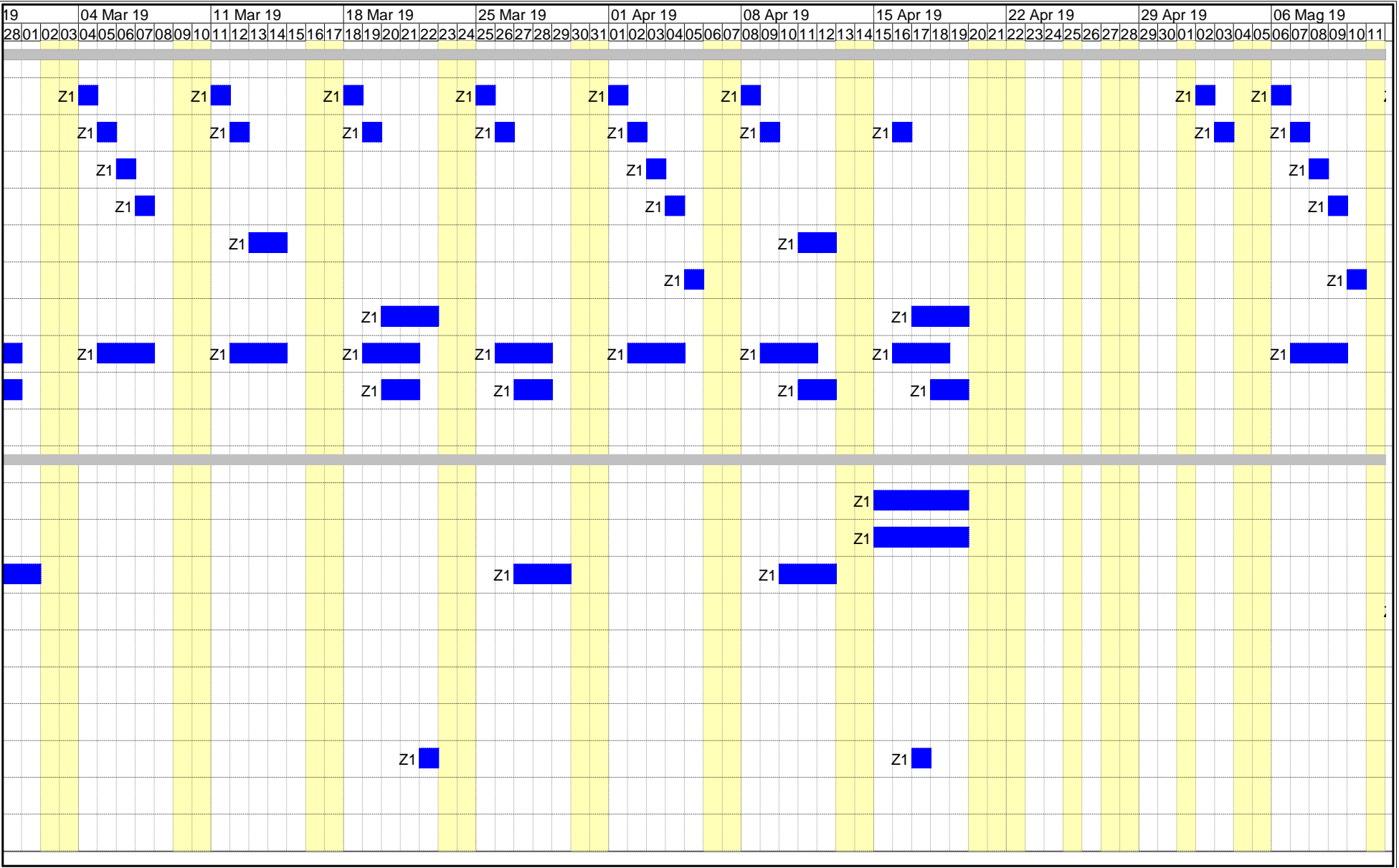
Cronoprogramma dei lavori

(Allegato XV e art. 100 del D.Lgs 9 aprile 2008, n. 81 e s.m.i - D.Lgs. 3 agosto 2009, n. 106)

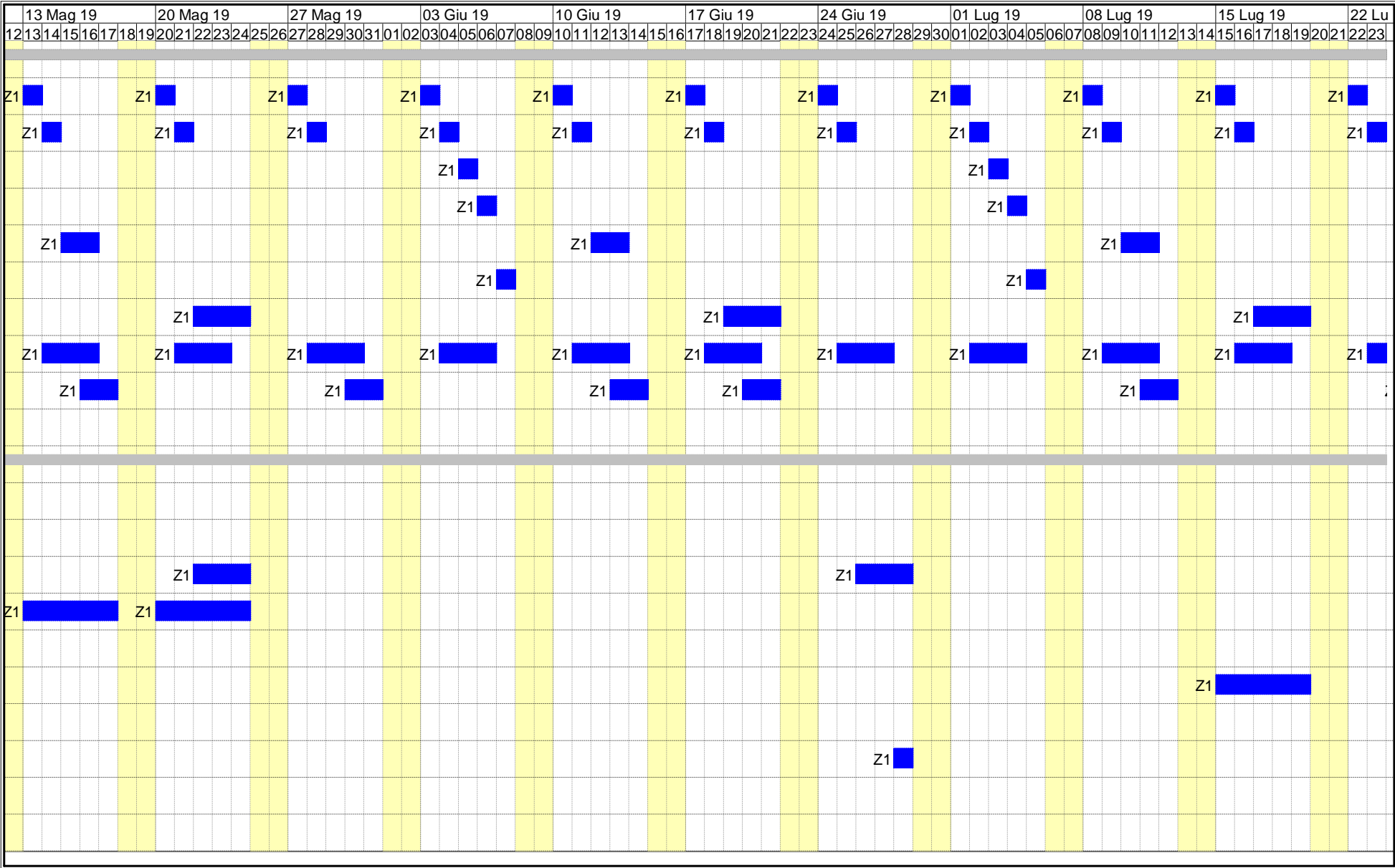
[illegible]

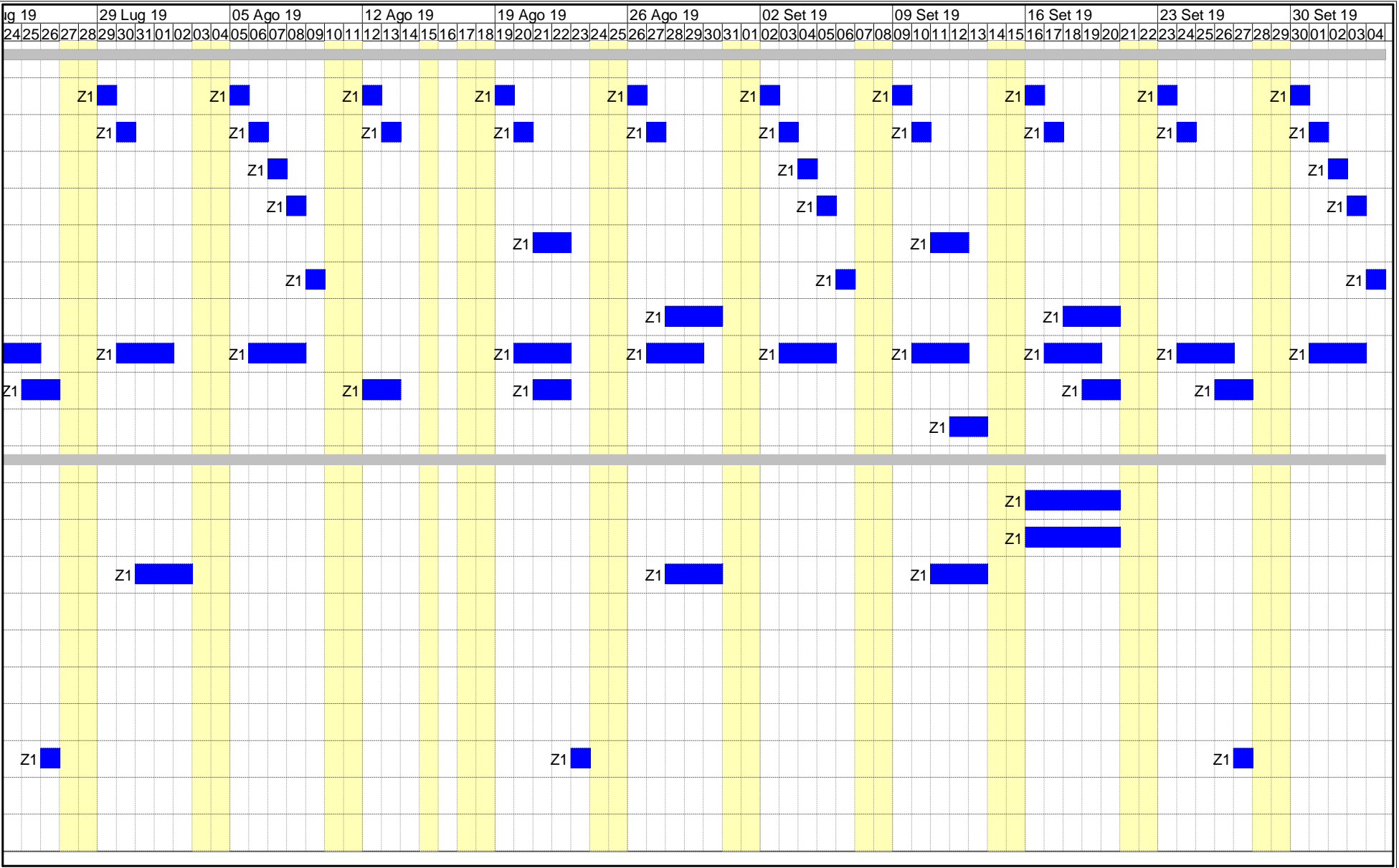
[illegible]

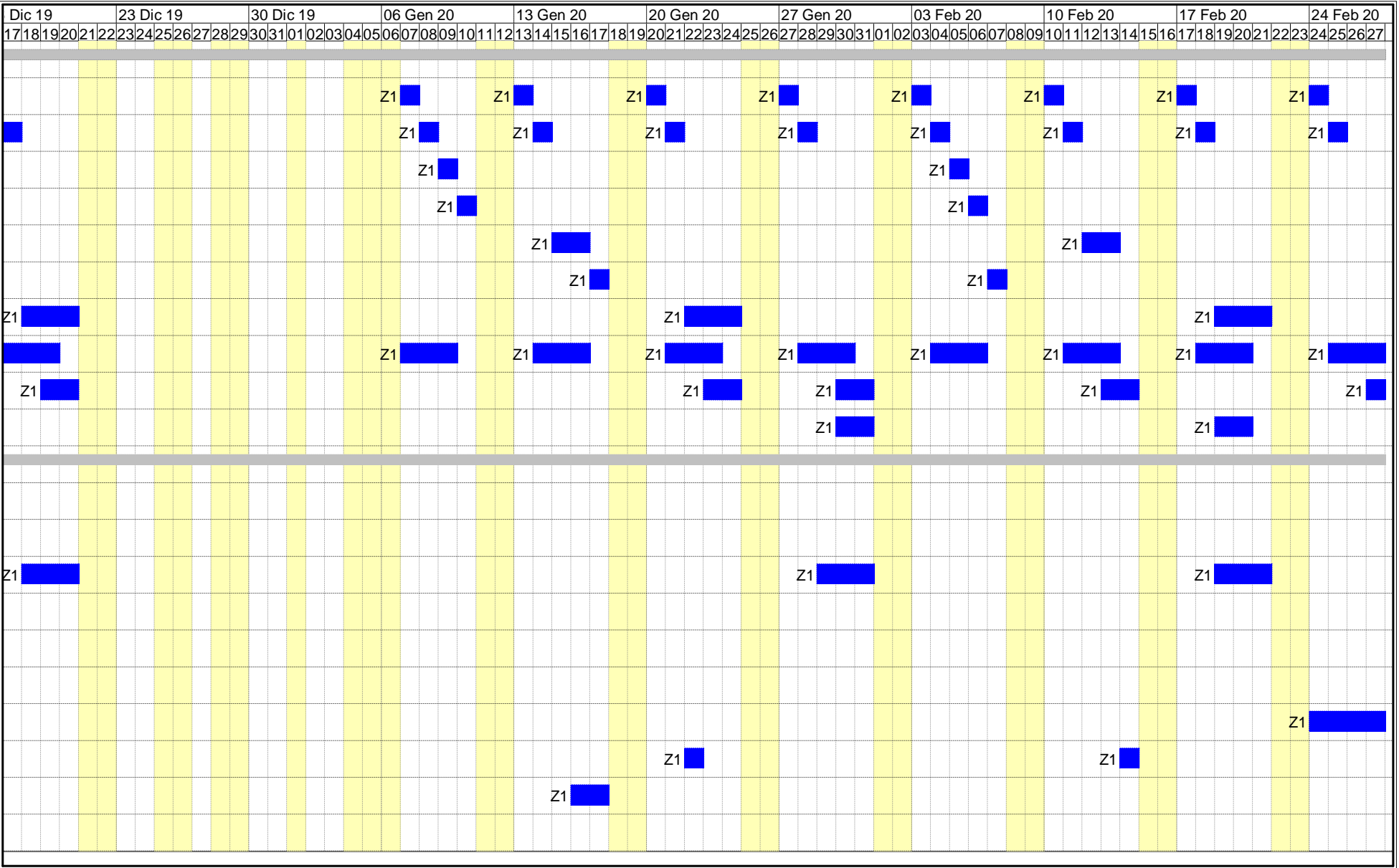


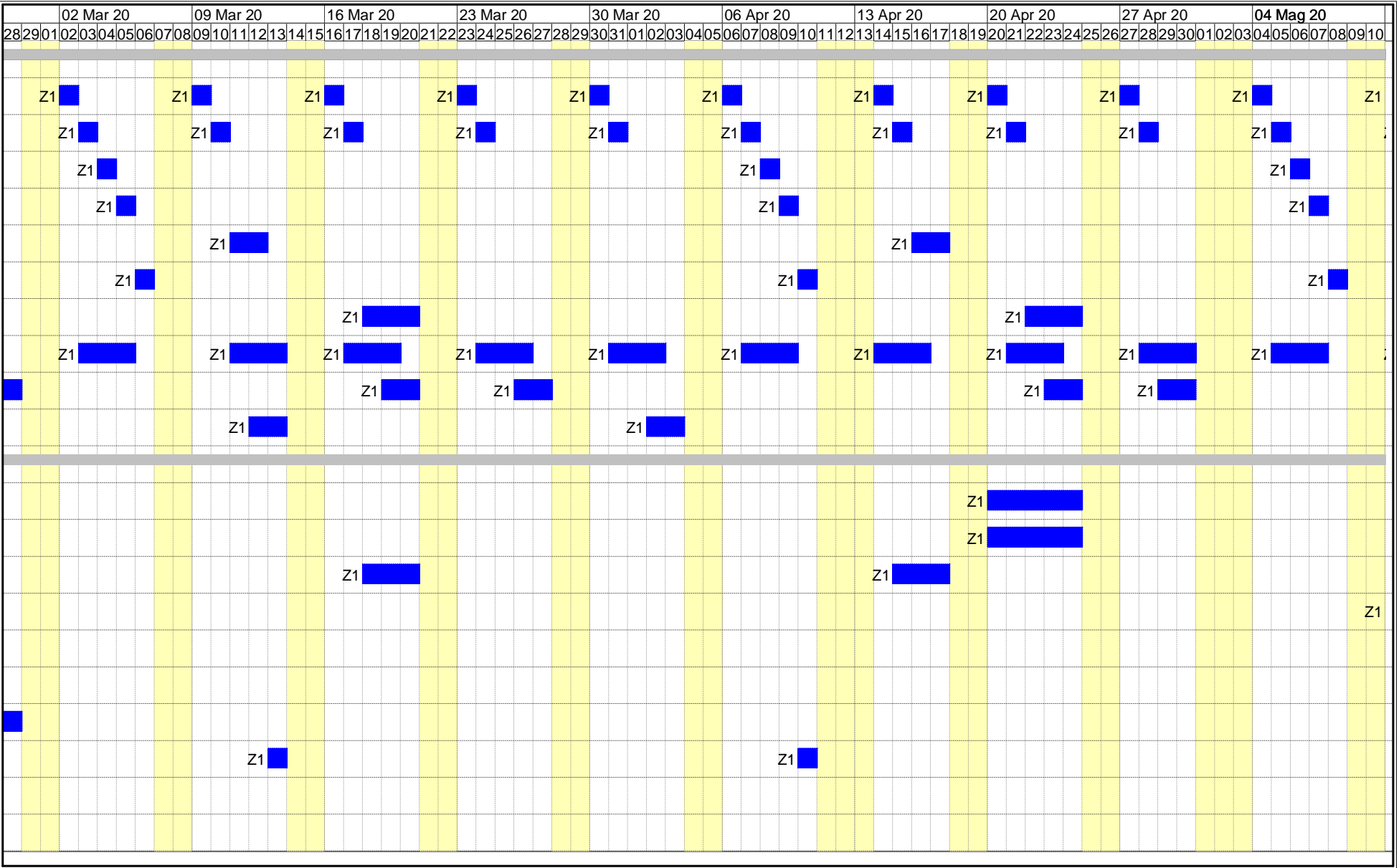


Lavori di manutenzione generale relativi a opere edili e affini, impianti elettrici Media Tensione e Bassa Tensione, impianti idrotermosanitari e di condizionamento - Pag. 6

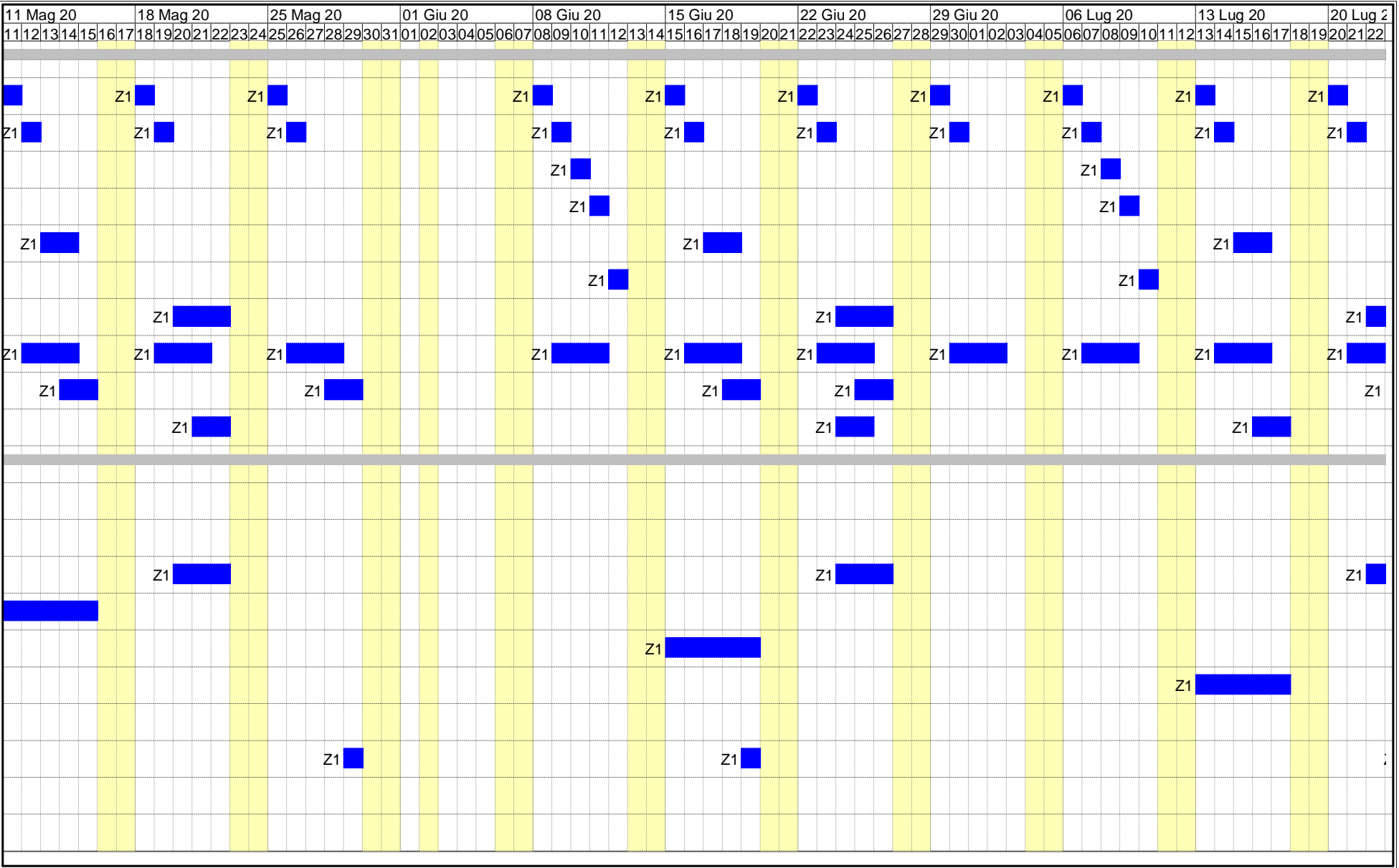


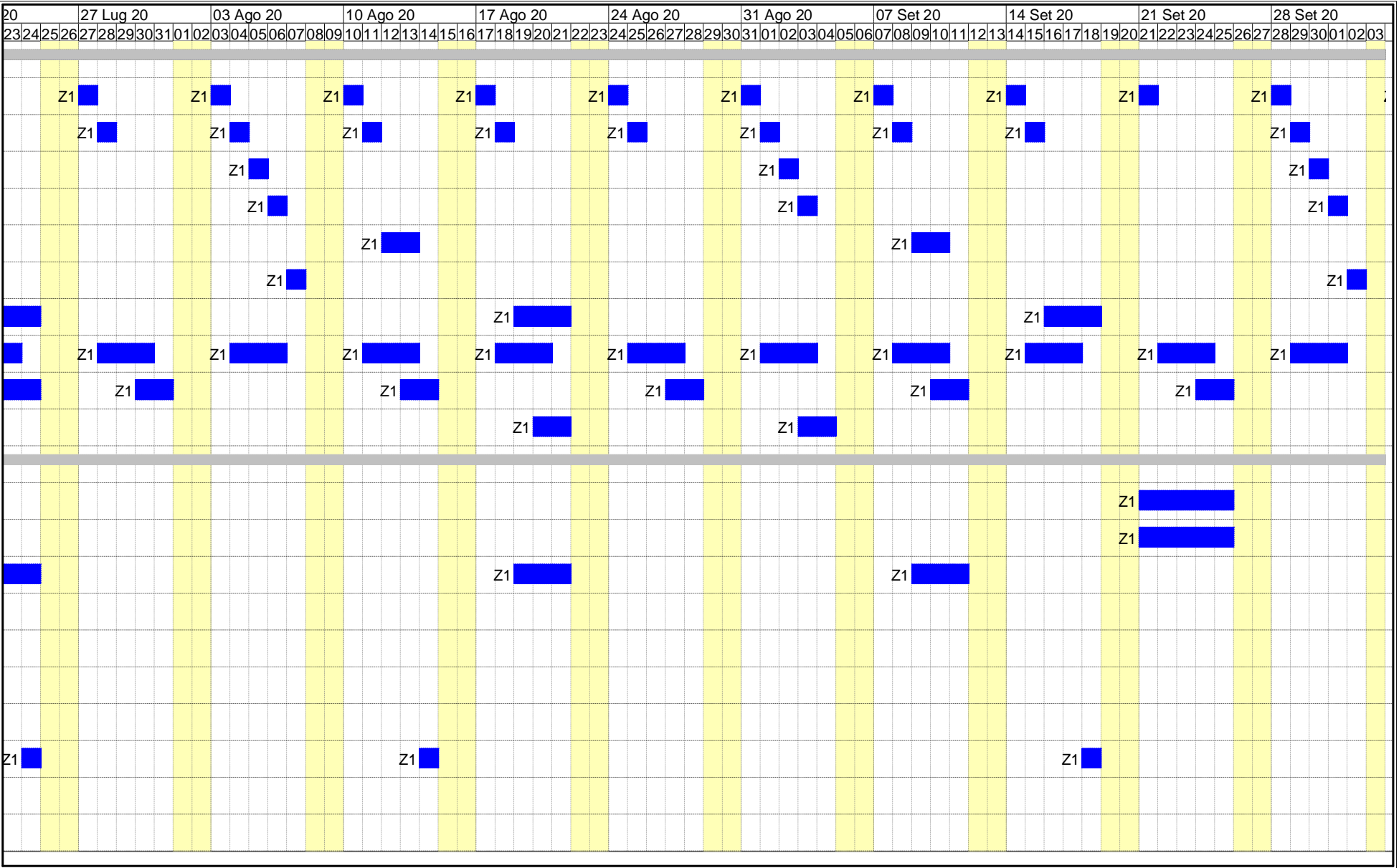


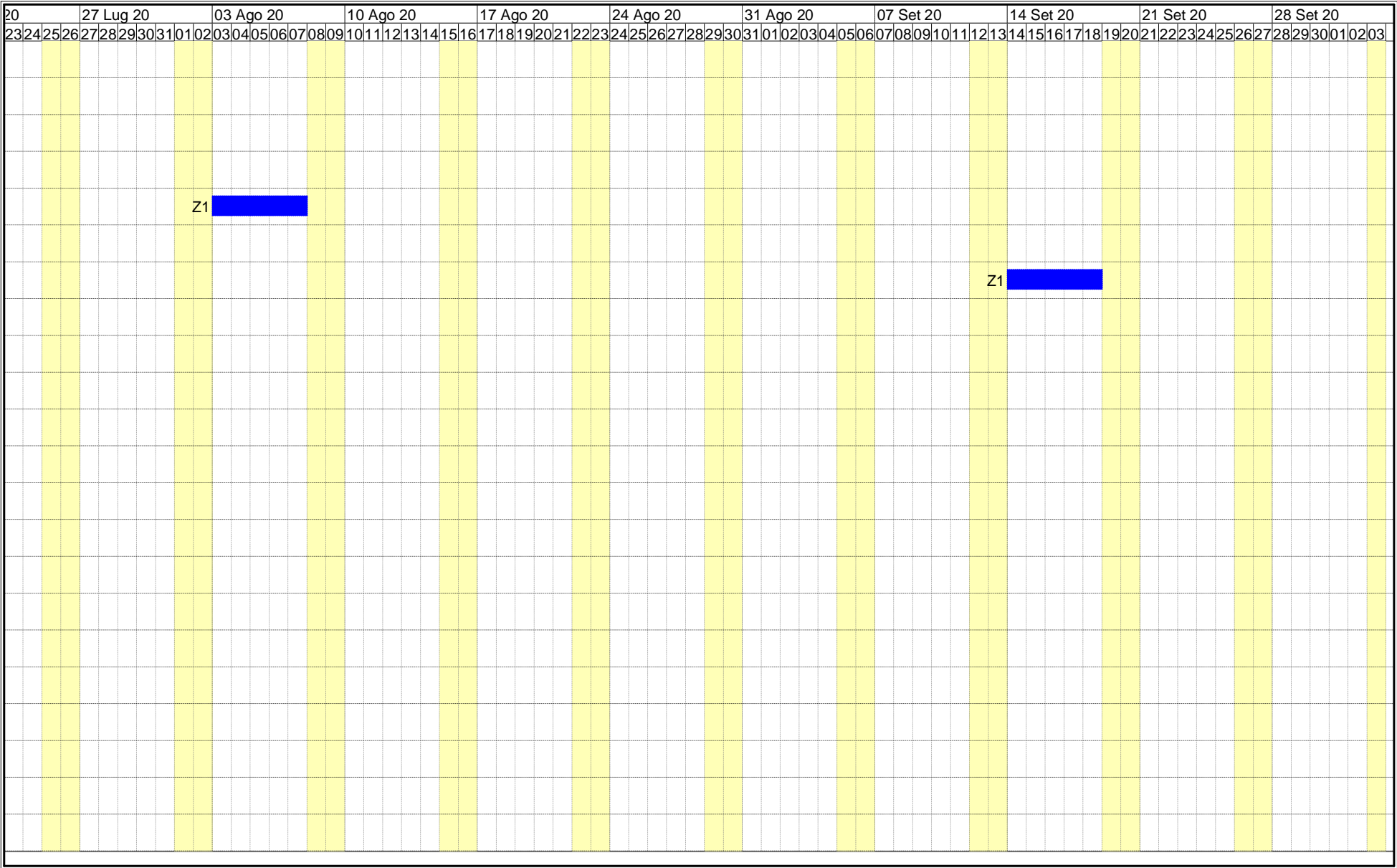




[illegible]







[illegible]

c 20		21 Dic 20				28 Dic 20				04 Gen 21				11 Gen 21				18 Gen 21				25 Gen 21				01 Feb 21				08 Feb 21				15 Feb 21				22 Feb 21																	
16	17	18	19	20	21	22	23	24	25	26	27	28	29	30	31	01	02	03	04	05	06	07	08	09	10	11	12	13	14	15	16	17	18	19	20	21	22	23	24	25	26														
																Z1																				Z1																			

